



ZigBee PC Console Quick Guide

Uconnect

2009.08.29

Main Page

The screenshot shows a software window titled "ZigBee_Demo". The interface includes a "Command" label, a "COM Port" dropdown menu set to "COM3", and buttons for "Start system", "Refresh", "Sensor", and "RSSI". Below this is a "Baud rate" dropdown menu set to "38400" and buttons for "Baud", "ADC", and "LED". There are two checkboxes: "Broadcast" and "End Device", both of which are unchecked. A text input field is followed by a "Send" button. The interface also features three list boxes: "Router list", "End Device list", and "Message receive:". The "Message receive:" list box has a vertical scrollbar. At the bottom left, the word "Static" is displayed.

Command

COM Port: COM3 Start system Refresh Sensor RSSI

Baud rate: 38400 Baud ADC LED

Broadcast End Device

Send

Router list:

End Device list:

Message receive:

Static

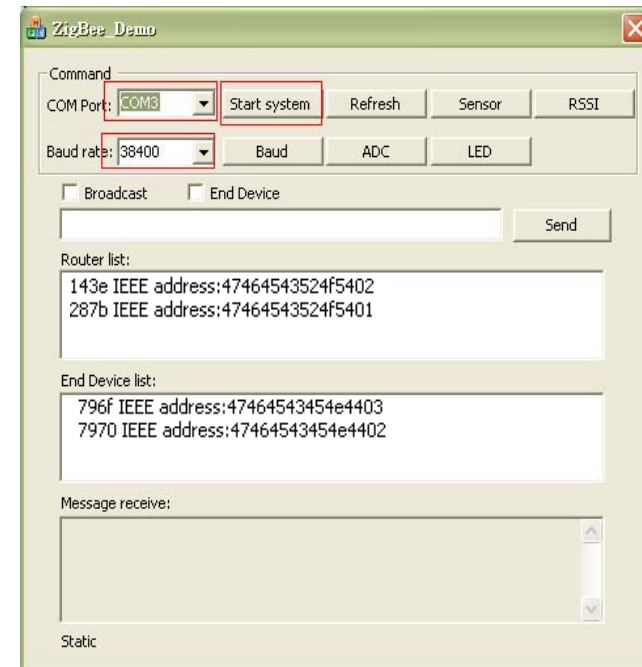


Default Setting

- Baud rate: 38400
- 8N1
- No Flow Control

Start operate

- Select COM port first
- Baud rate: 38400
- Click “Start system”
- The nodes will show in router list and end device list



Change Baud rate

- After Click “Start system” button, you can change baud rate setting.
- Select baud rate (ex:115200)
- Click “Baud” button
- In “Message receive” will show “Baud: OK”



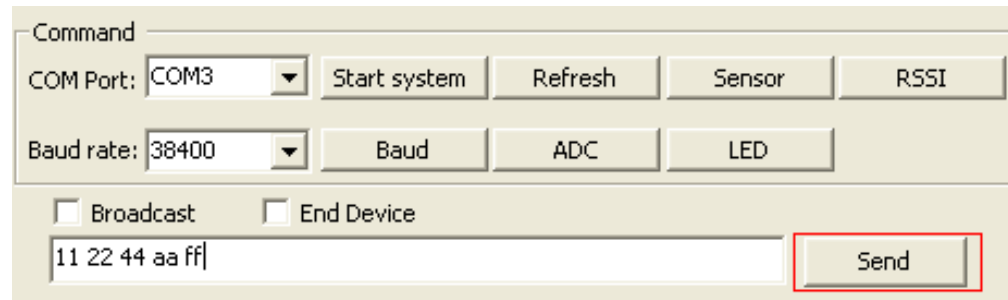


Refresh button

- Click “Refresh” will refresh the router list and end device list and clear message receive

Send message

- Select one node in end device list.
- Enter hex data: 11 22 aa bb ff. Click Send
- The node will receive the data and output in uart port.
- Check broadcast, if you want broadcast data
- Check end device, if the firmware was end device



The screenshot shows a software interface for sending messages. It features a 'Command' section with a dropdown menu for 'COM Port' set to 'COM3' and a 'Baud rate' dropdown set to '38400'. Below these are several buttons: 'Start system', 'Refresh', 'Sensor', 'RSSI', 'Baud', 'ADC', and 'LED'. At the bottom, there are two checkboxes: 'Broadcast' and 'End Device', both of which are unchecked. A text input field contains the hex data '11 22 44 aa ff', and a 'Send' button is highlighted with a red border.



Other function instruction

- Select one node in end device list or router list.
- RSSI: return rssi value
- LED: The Led on the sensor board will change the state(on \leftrightarrow off)
- Sensor: It will return the temperature value.
- ADC: analog to digital value