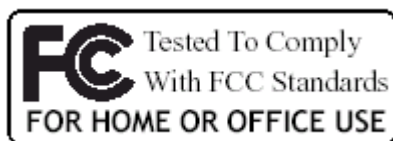


Printer Combo Adapter

USER'S GUIDE

(For Windows XP Bluetooth Driver)

VERSION 1.0



© All rights reserved.

All trade names are registered trademarks of respective manufacturers listed.

The Bluetooth name and the Bluetooth trademarks are owned by Bluetooth SIG, Inc.

This manual may not be copied in any media or form without the written consent of original maker.

TABLE OF CONTENTS

WELCOME	1
Features	1
System Requirements	1
Before You Start	2
Connecting your Bluetooth USB Adapter with PC	2
Printer Combo Adapter	2
Getting to Know Your Printer Combo Adapter	3
Function of LEDs During Printing	3
MICROSOFT XP BLUETOOTH DRIVER	4
ADD ONE PRINTER	6
START PRINTING	9
CHANGE PRINTER	11
MULTIPLE PRINTER COMBO ADAPTERS	17
Configure the first Printer Adapter	18
Configure the second Printer Adapter	19
Configure the third Printer Adapter	20
Start Printing	22
Change Printer	23
MORE LOOK ON BLUETOOTH DRIVER	25
PRINTER ERROR MESSAGE	26
CANCEL PRINTING JOB	26
APPENDIX A	27
APPENDIX B	28
FCC.....	29
WARRANTY	30

WELCOME

Thank you for your purchase of the Printer Combo Adapter. Featuring Bluetooth wireless technology, Printer Combo Adapter creates cable-free printing connections between your desktop PCs and your printers. Printer Combo Adapter is compatible with all Bluetooth v2.0-certified devices and you can connect your computing devices and printers 100 meters away without cables in your working environments, such as home or office.

FEATURES

- ☐ Compliant with Bluetooth standard version 2.0 .
- ☐ Support for Microsoft Windows 98SE, Me, 2000 and XP.
- ☐ Operating distance of up to 100 meters in free space.
- ☐ Bluetooth Class I (20 dbm).
- ☐ Support both USB and 1284 printer port interfaces.
- ☐ Both SPP and HCRP print service profiles supported.
- ☐ Easy operation and setting up.

SYSTEM REQUIREMENTS

- ☐ PCs must have a Bluetooth device installed, such as a Bluetooth USB dongle. It allows you to communicate with Printer Combo Adapter.
- ☐ PCs must have a Bluetooth device driver installed, such as Widcomm driver. It is always accompanied with your Bluetooth dongle device purchased. Furthermore, make sure the driver is of the latest revision which supports Bluetooth print service.
- ☐ PCs can have different printer drivers installed, printer drivers such as HP, Epson, Canon...etc. You can install at least one before using Printer Combo Adapter.
- ☐ USB printer shall follow USB printer specification as downloadable from USB forum - <http://www.usb.org>. Some printers do not follow this specification and can not be used.

BEFORE YOU START

1. Confirm Box Contents



Printer Combo Adapter



Power Adapter



Manual

IMPORTANT

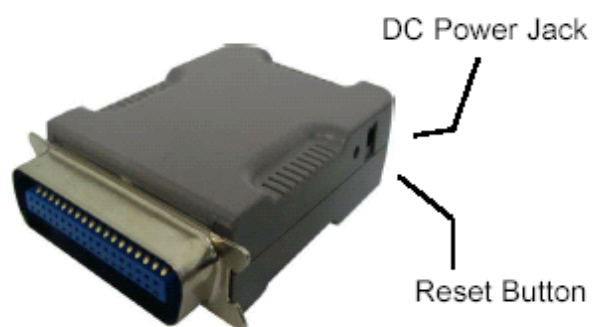
PLEASE READ ALL INSTRUCTIONS AND THE SAFETY GUIDE BEFORE YOU PLUG THE UNIT INTO THE PRINTER.

CONNECTING YOUR BLUETOOTH USB ADAPTER WITH PC

- Connect your Bluetooth USB dongle with our PC.
- Install Widcomm Bluetooth software driver.



PRINTER COMBO ADAPTER



GETTING TO KNOW YOUR PRINTER COMBO ADAPTER

Printer combo adapter supports two interfaces which can be used to connect with your printer.

- 1). IEEE-1284 - It is a 36-pin male connector on the front. Connect it to your printer. If your printer hides its female connector inside its case, then you have to open it.
- 2). USB - It is a USB type A connector. You need to connect one end of the USB cable to printer combo adapter, then connect another end to the printer.

Note: If your printer supports both interfaces, we recommend you to choose just one to connect with printer combo adapter. If you connect printer combo adapter to both of them, 1284 interface will be the functioning one.

- 3). Apply power to printer combo adapter by using the power adapter accompanied.
- 4). RESET button is to re-initialize the printer adapter, it is normally left unused. You also can un-plug the power adapter, then plug it again to get the same result.

FUNCTION OF LEDS DURING PRINTING

POWER LED

- Power LED turns on when POWER is applied to printer combo adapter.

BLUETOOTH LED

- Bluetooth LED is blinking when Bluetooth link is established but no data is transmitted on the line.
- Bluetooth LED is ON when PC is wirelessly sending data to printer through printer combo adapter.

PRINTER LED

- Printer LED is ON when there is a USB or parallel (IEEE-1284) printer connected to the printer combo adapter.
- Printer LED is OFF when no printer is connected.
- Printer LED is blinking when PC is sending data to printer through printer combo adapter.

MICROSOFT XP BLUETOOTH DRIVER

If you have installed service pack 1 on Windows XP, the Microsoft built-in Bluetooth printing support is available when a USB Bluetooth Dongle is plugged into your computer.

Click **START**

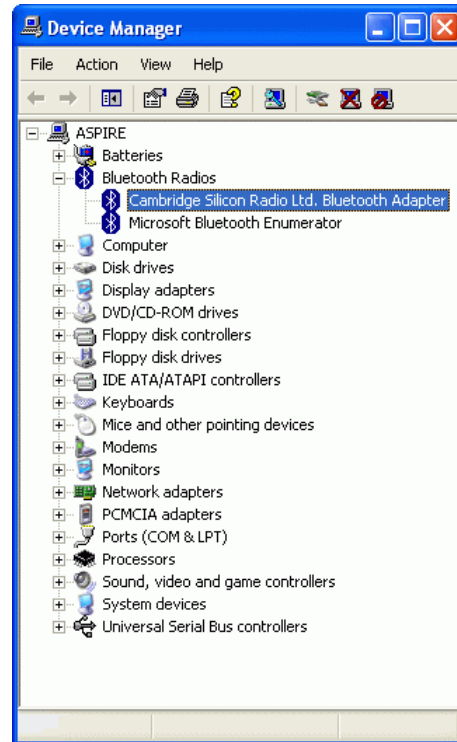
Select **Control Panel**.

Select **System**.

Select **Device Manager**.

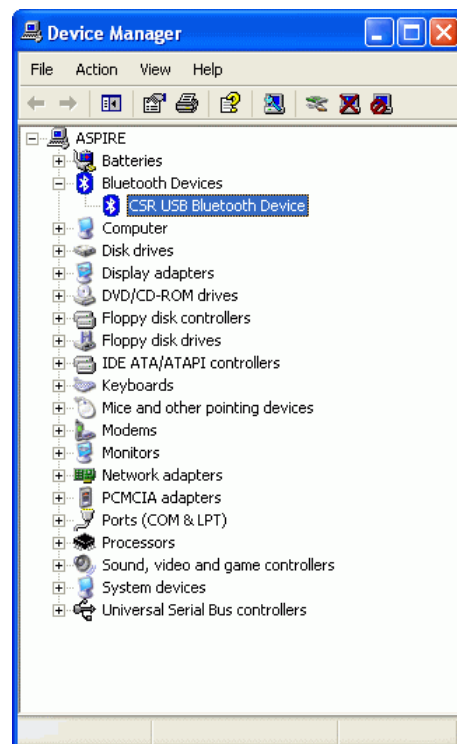
In **Bluetooth Radios**, you can find Microsoft Bluetooth device driver - **Cambridge Silicon Radio Ltd. Bluetooth Adapter**.

If the driver is NOT a Microsoft driver, instead, if it is a Widcomm driver - **CSR USB Bluetooth Device**, then you can follow the following steps to update it.



Step 1:

Right click the icon **Update Driver....**



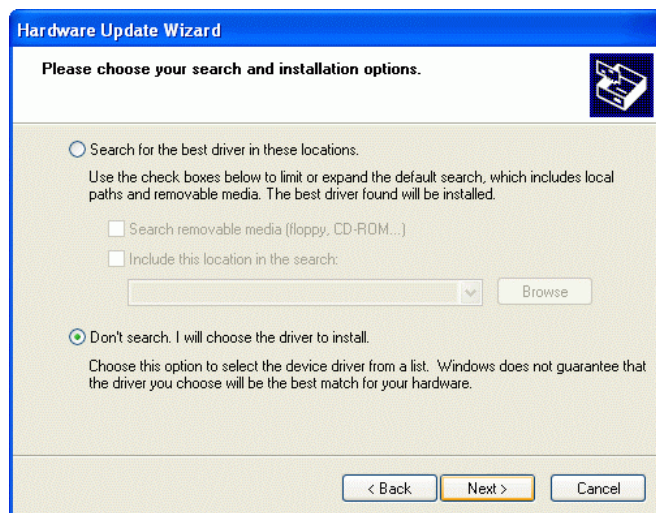
Step 2:

Select **Install from a list or specific location (Advanced)**.
Click **Next**.



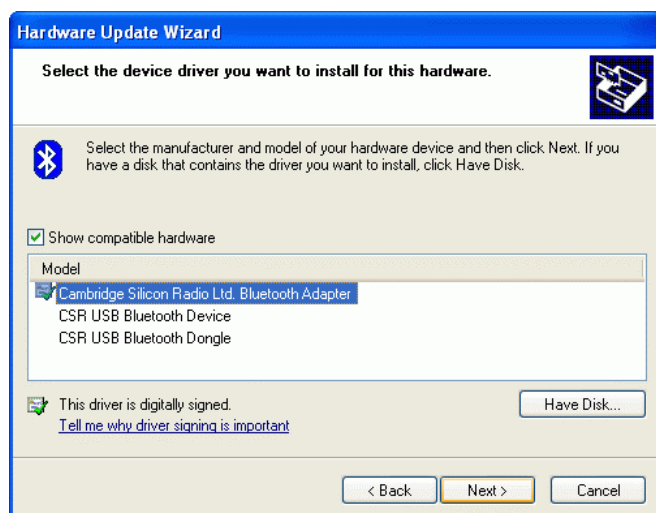
Step 3:

Select **Don't search, I will choose the driver to install**.
Click **Next**.

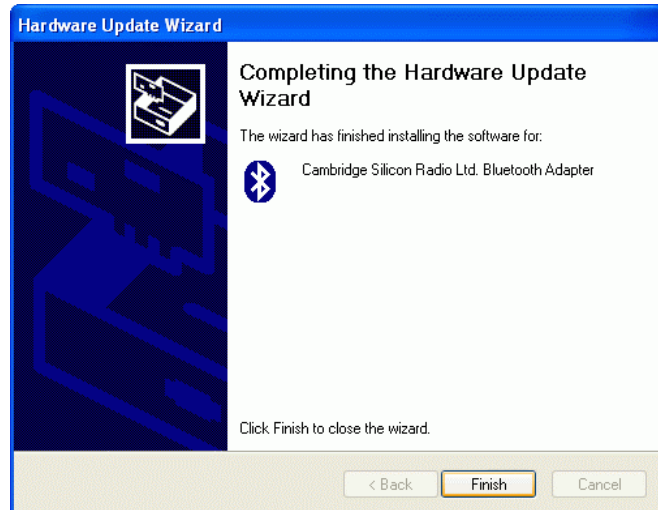


Step 4:

Select driver **Cambridge Silicon Radio Ltd. Bluetooth Adapter**.
Click **Next**.

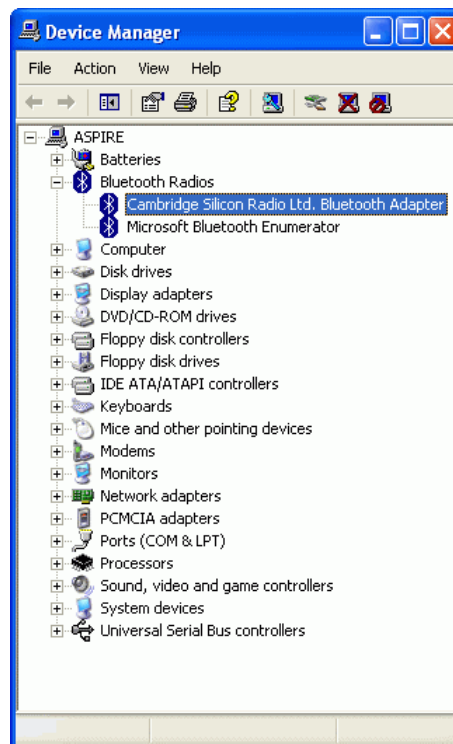


Step 5:
Click [Finish](#) to complete.



Step 6:
From Device Manager page,
Microsoft Bluetooth device
driver [Cambridge Silicon Radio
Ltd. Bluetooth Adapter](#) can be
found.

At this moment, your PC has
Microsoft Bluetooth driver
supported now.



ADD ONE PRINTER

If you have installed service pack 1 on Windows XP, the Microsoft built-in Bluetooth printing support is available.

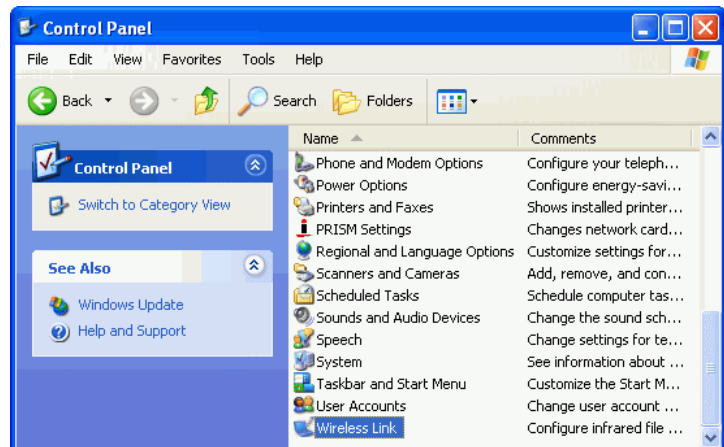
In the following example, Bluetooth Combo Printer Adapter is connected to an EPSON Stylus C61 printer, and both Bluetooth Combo Printer Adapter and printer are powered on.

Step 1:

Click **START**.

Select **Control Panel**.

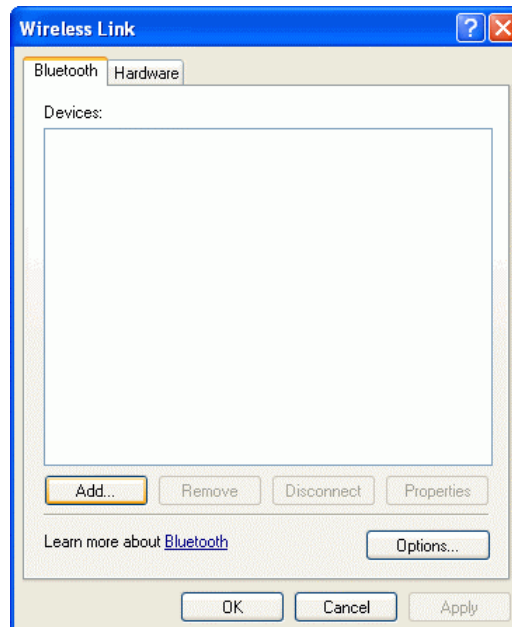
Select **Wireless Link**.



Step 2:

Pop up **Wireless Link** window.

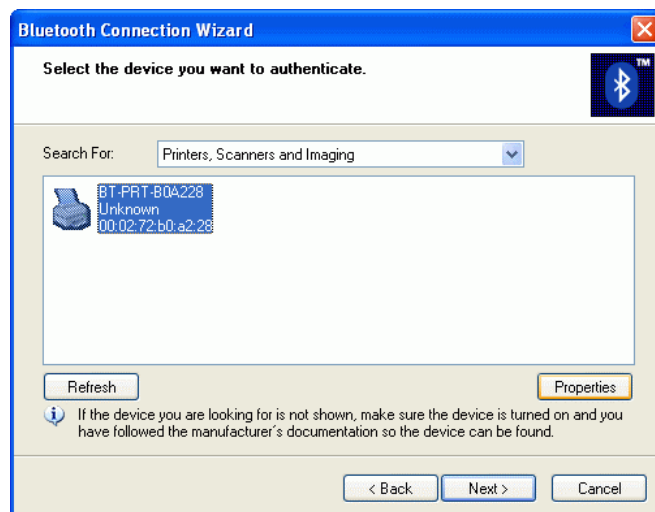
Click button **Add....**



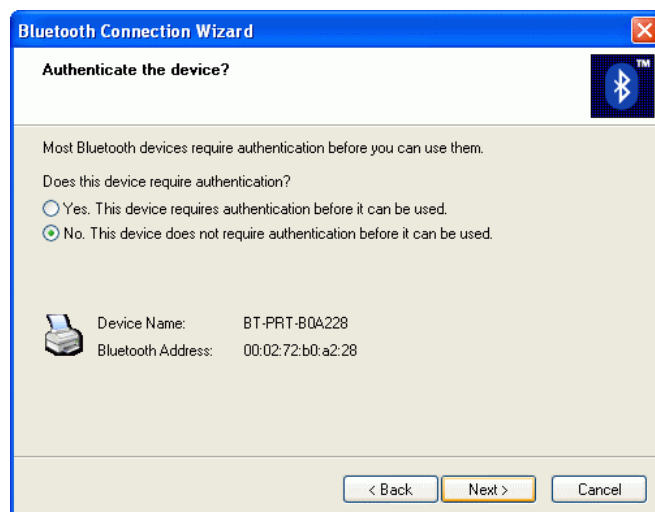
Step 3:
Click **Next**.



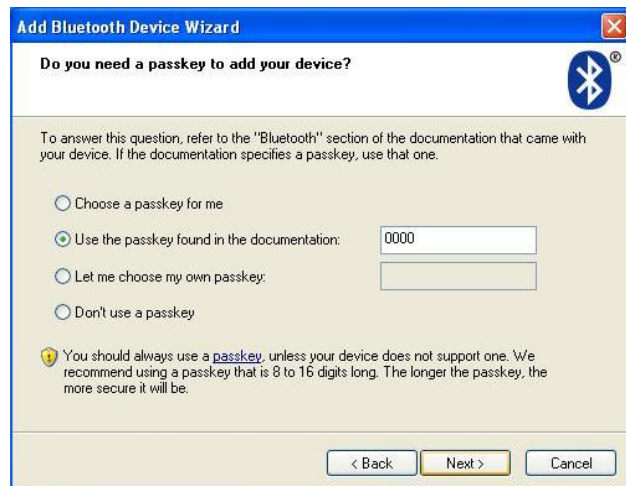
Step 4:
Search Bluetooth device in range. You can specify device type as filter. We will choose to search Bluetooth **Printers, Scanners and Imaging**, and one unknown printer **BT-PRT-B0A228** is found.
Click **Next**.



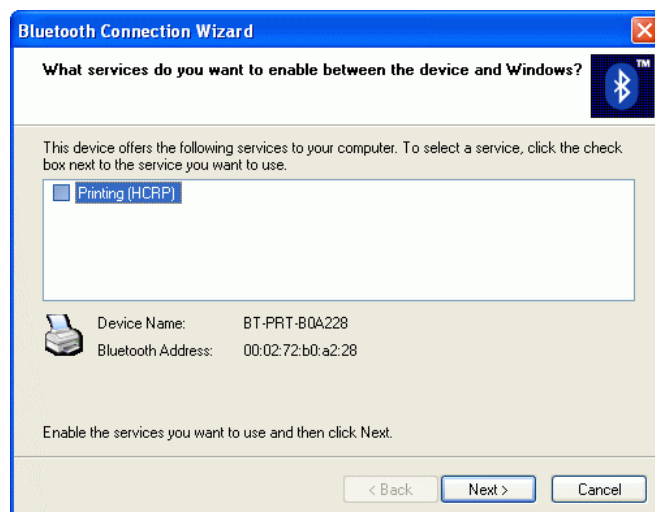
Step 5:
Select **No**. This device does not **require authentication** before it can be used.
Click **Next**.



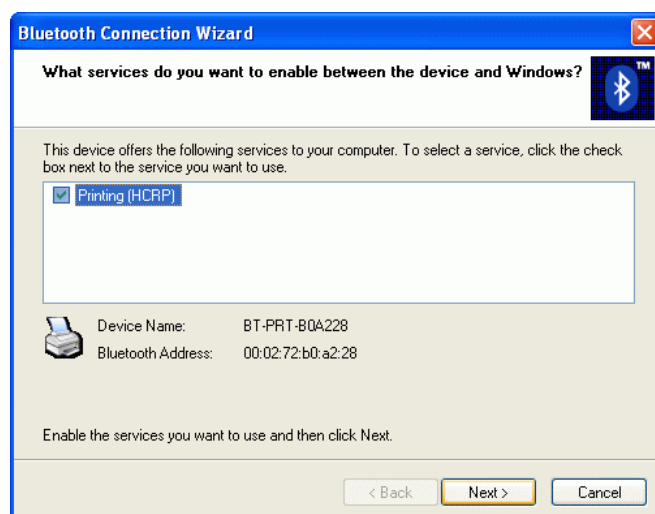
Step 6:
Enter the passkey "0000"
and click "Next".



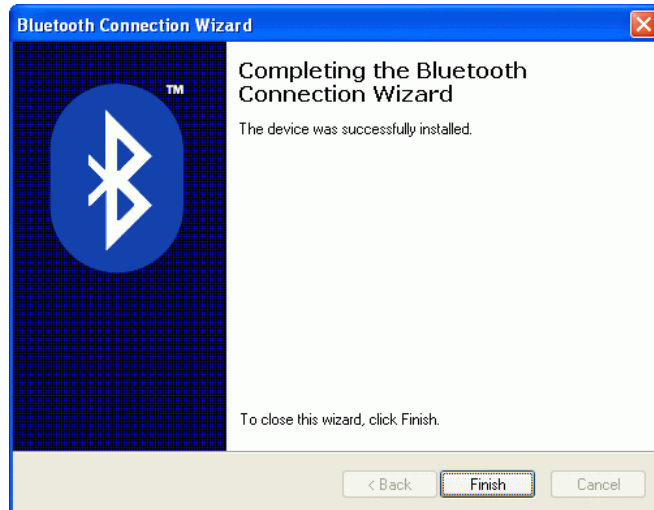
Step 7:
Windows XP has been
connecting to Bluetooth Combo
Printer Adapter and retrieving its
available service **Printing
(HCRP)**.



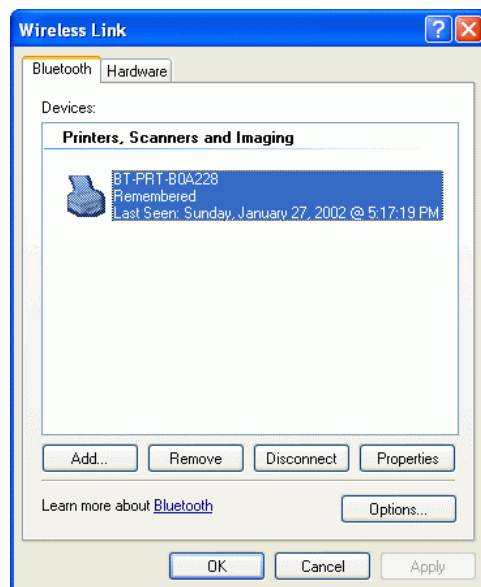
Step 8:
Select **Printing (HCRP)** by
checking the box.
Click **Next**.



Step 9:
Click **Finish** to complete.



Step 10:
This printer is marked as Remembered.
Click **OK** to close window.

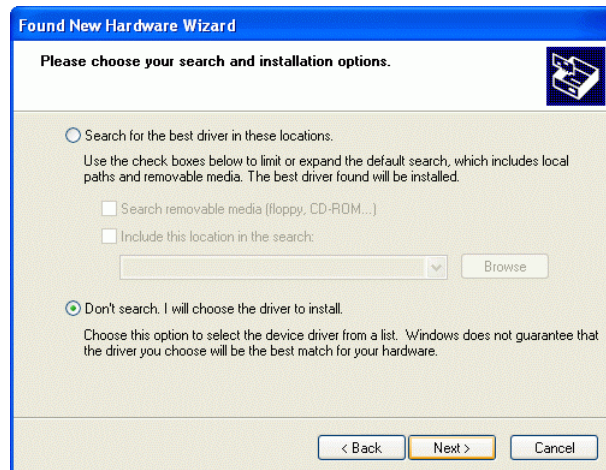


Step 11:
Need to specify printer driver,
select **Install from a list or specific location (Advanced)**.
Click **Next**.



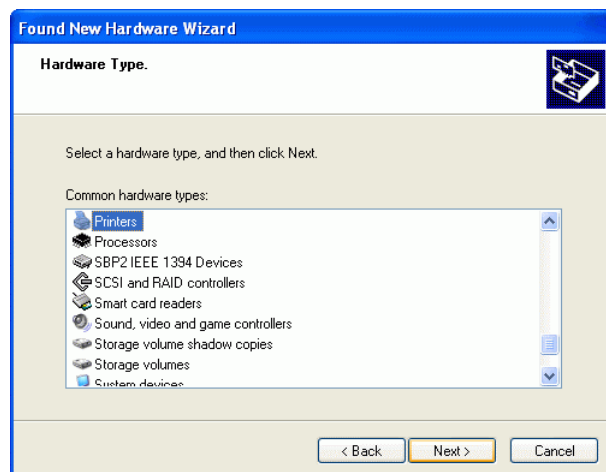
Step 12:

Select **Don't search**, I will choose the driver to install.
Click **Next**.



Step 13:

Select **Printer**.
Click **Next**.

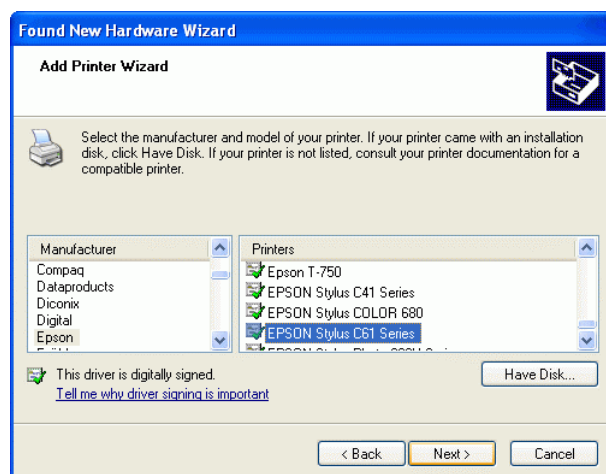


Step 14:

If the printer driver is already installed, please select it. If not, you have to click **Have Disk...** to install it.

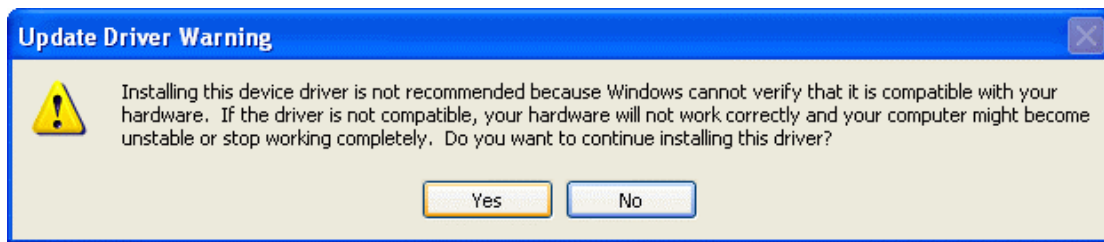
In this example, EPSON Stylus C61 Series driver was installed before, so just select it.

Click **Next**.



Step 15:

A warning message is displayed.
Click **Yes** to continue.



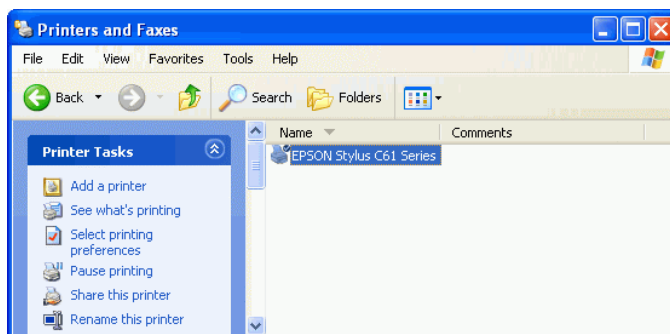
Step 16:

Complete the Found New Hardware Wizard by clicking **Finish**.



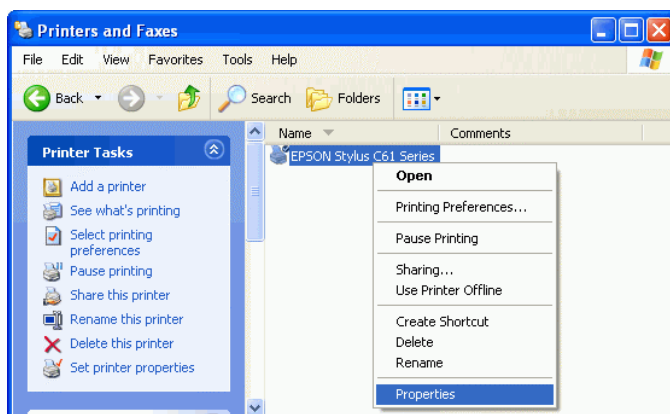
Step 17:

New printer **EPSON Stylus C61 Series** is added into Printers and Faxes.



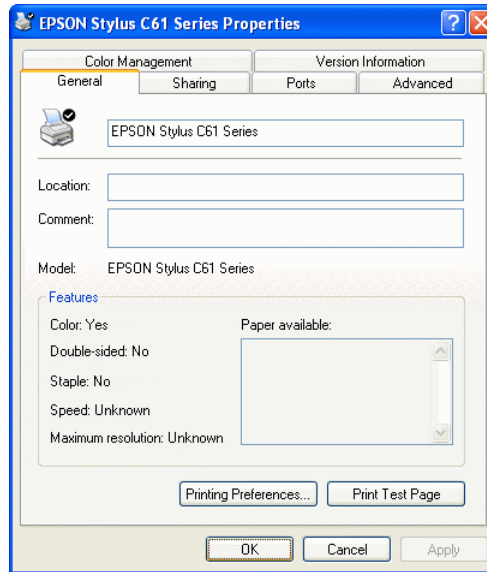
Step 18:

Right click on printer icon to check it's **Properties**.



Step 19:

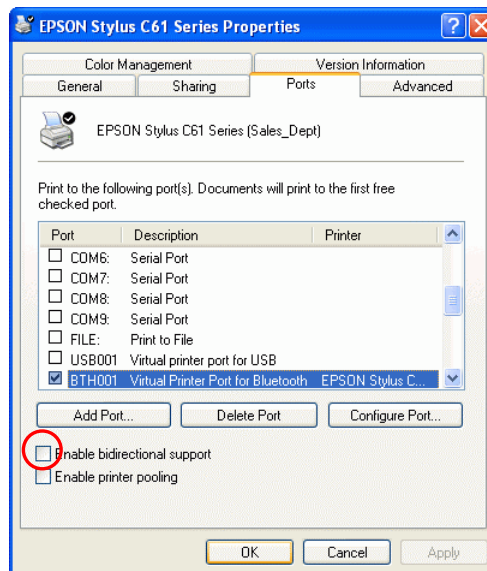
From **General** page, we can find a printer - **EPSON Stylus C61 Series** is there.



Step 20:

From **Ports** page, Windows XP has assigned a virtual printer port - **BTH001** to your EPSON Stylus C61 printer.

BTH001 is like normal LPT1: port which is used in local printer connection. Except **BTH001** is accompanied with Bluetooth Combo Printer Adapter, while LPT1: is directly connected through parallel port.

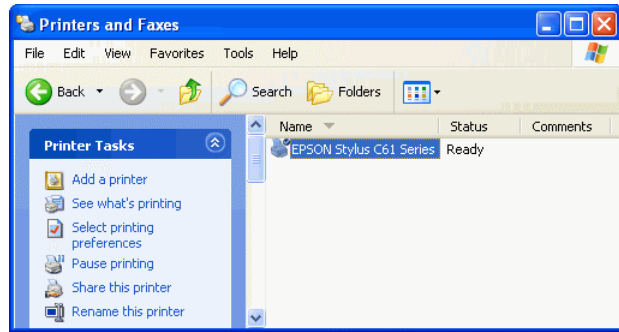


Note - Please **unmark** or **disable** bidirectional support. Some printers might stay at wait state for one minute after printing is done if bidirectional support is enabled.

Click **OK** to exit.

START PRINTING

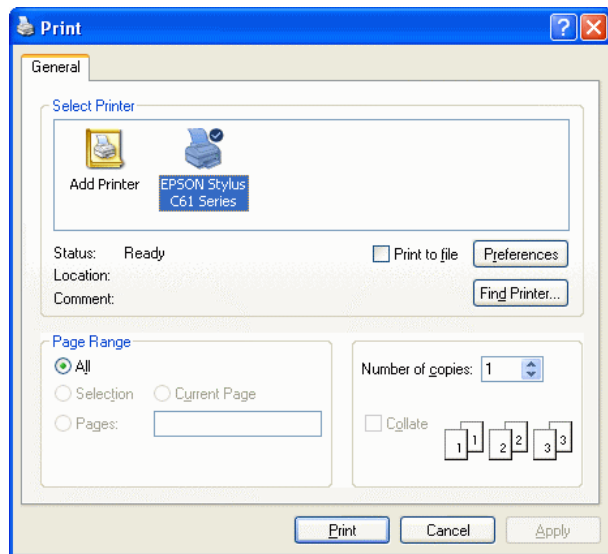
Click **My Computer** icon on the desktop screen, select **Control Panel**, select **Printers and Faxes**, then you can find a Bluetooth Printer is there : **EPSON Stylus C61 Series**.



Print a file by using Bluetooth Combo Printer Adapter is quite straight forward, it is just like the normal way you are printing a file.

For EPSON Stylus C61 Series :

When page range and number of copies screen prompts, select **EPSON Stylus C61 Series** printer, then click **OK**.



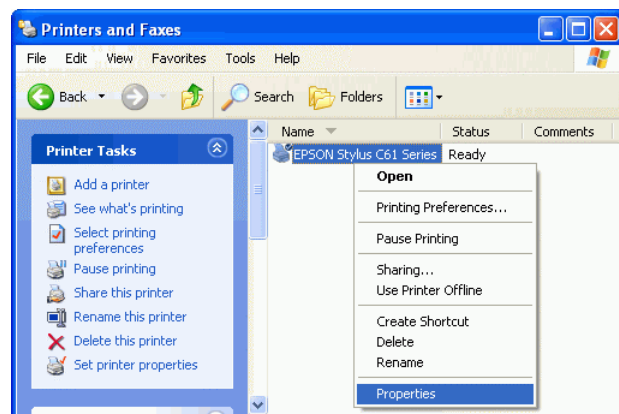
EPSON Stylus C61 Series

CHANGE PRINTER

In your home or office, there may be two or three different printers coming from different brands. In previous example, we selected EPSON Stylus C61 color printer as our bluetooth printer. If you want to change it to another printer, such as EPSON Stylus Photo 830U, then you shall know how to change printer driver to a different one.

Step 1:

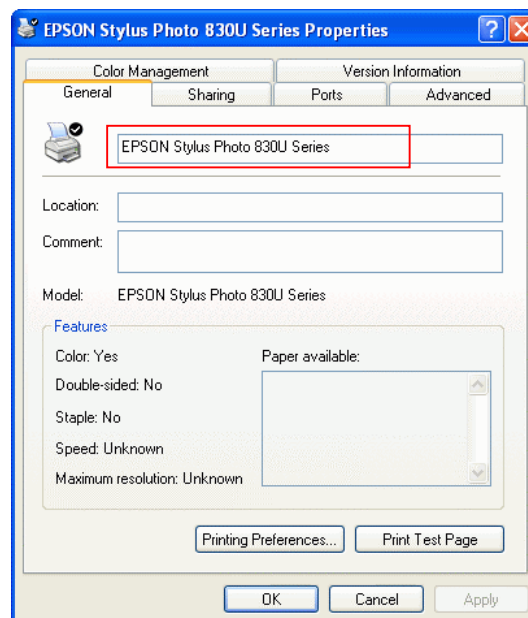
Select Control Panel .
Select Printers and Faxes.
Right click on **EPSON Stylus C61 Series** printer icon.
Click on **Properties**.



Step 2:

You can change printer name to such as :
EPSON Stylus Photo 830U Series.

Click on **Advanced** tab to see if the driver of EPSON Stylus Photo 830U has been installed before.

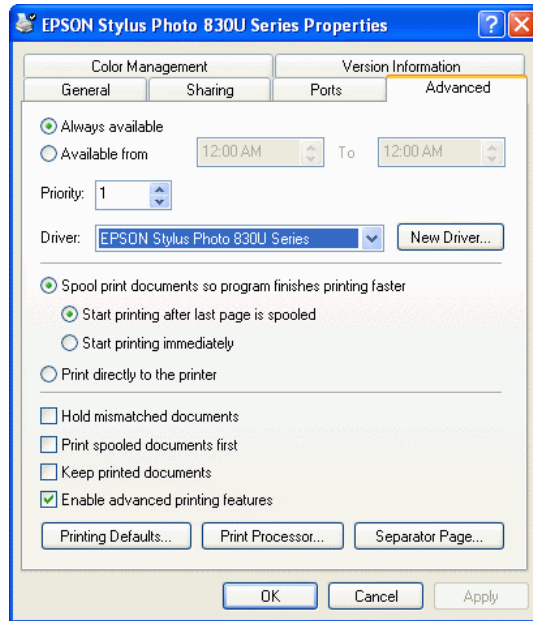


Step 3:

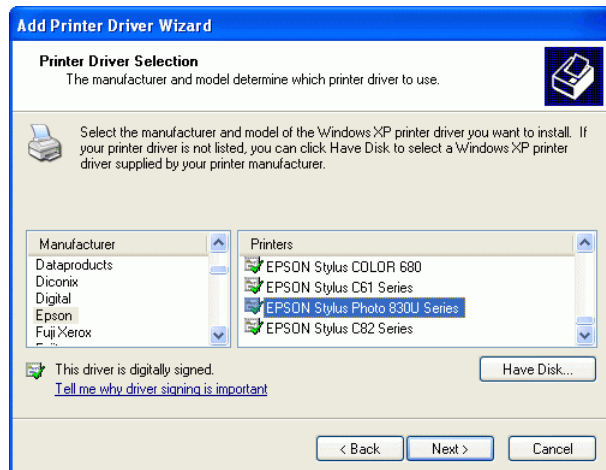
In Advanced setup, try to find the driver of EPSON Stylus Photo 830U.

If there is an EPSON Stylus Photo 830U driver installed before, select it and click **OK** to complete the change.

If there is none, click **New Driver** and follow the instructions to install it.

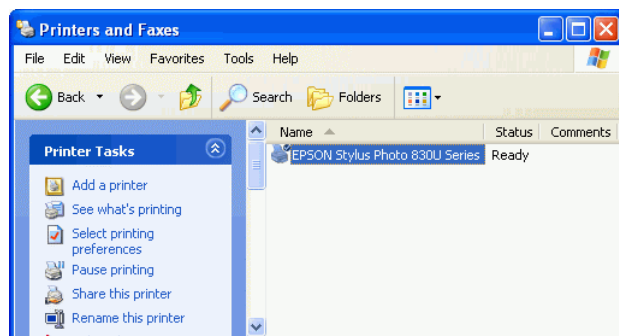


Once New Driver is selected, this screen will prompt to ask you to install new driver step by step.



Step 4:

When installation of new printer driver is complete, the Printers and Faxes screen will look like this. EPSON Stylus Photo 830U Series is coming out as the new printer which must be connected to the Bluetooth Combo Printer Adapter now.



MULTIPLE PRINTER COMBO ADAPTERS

Previous sections talk about how to do a printing job with a Bluetooth Combo Printer Adapter. This section is talking about when multiple adapters are installed in your office, how to configure each adapter before printing ? Supposed there are three Bluetooth Combo Printer Adapter, two of them are connected to two EPSON Stylus C61 printers and one is connected to an EPSON Stylus Photo 830U printer separately.

In the following example, we assume:

BT-PRT-B0A351 is connecting to EPSON Stylus C61.

BT-PRT-B0A352 is connecting to EPSON Stylus C61.

BT-PRT-B0A353 is connecting to EPSON Stylus Photo 830U.

The configuration steps of each Bluetooth Combo Printer Adapter are :

1. Connects Bluetooth Combo Printer Adapter to printer through USB or parallel port.
2. Power on Bluetooth Combo Printer Adapter.
3. Power on printer.
4. From PC side, click START -> Control Panel -> Wireless Link, and follow the configuration steps as mentioned in previous sections to install the driver.



1. Configuring the first Bluetooth Combo Printer Adapter

Connect the first Bluetooth Combo Printer Adapter to an EPSON Stylus C61 printer. Power on Bluetooth Combo Printer Adapter and printer.

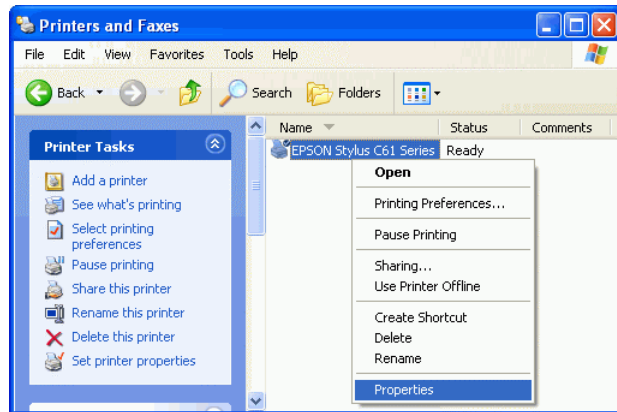
Step 1:

Follow the steps 1 ~ 15 as described in ADD ONE PRINTER (from page 7 to page 12) to add the first local printer. Click [Finish](#).



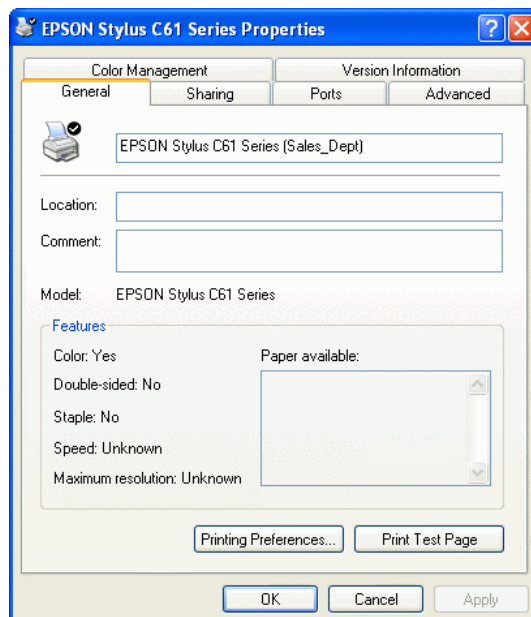
Step 2:

Click [My Computer](#) icon on the desktop screen, select [Control Panel](#), select [Printers and Faxes](#). Right click on [EPSON Stylus C61 Series](#) printer icon. Click on [Properties](#).



Step 3:

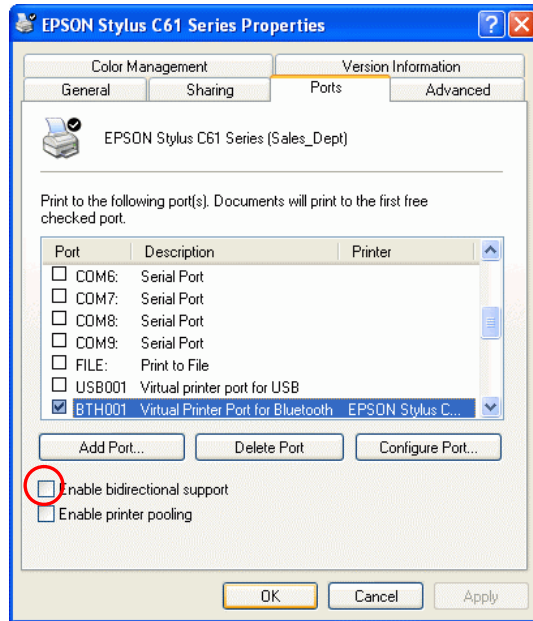
From [General](#) page, you can change printer name to [EPSON Stylus C61 \(Sales_Dept\)](#). At end user side, you will only find a printer named [EPSON Stylus C61 \(Sales_Dept\)](#), you will not see any printer named BT-PRT-B0A351.



Step 4:

From [Ports](#) page, Windows XP has assigned a virtual printer port - BTH001 to your EPSON Stylus C61 series (Sales_Dept) printer.

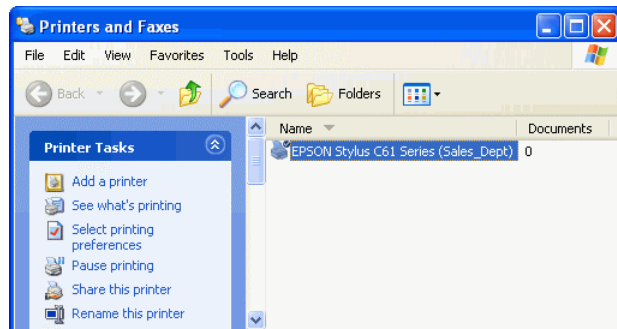
[BTH001](#) is like normal LPT1: port which is used in local printer connection. Except BTH001 is accompanied with Bluetooth Combo Printer Adapter, while LPT1: is directly connected through parallel port.



Note - Please **unmark** or **disable** bidirectional support. Some printers might stay at wait state for one minute after printing is done if bi-directional support is enabled.

Click **OK**.

The first printer - [EPSON Stylus C61 series \(Sales_Dept\)](#) can be found on [Printers and Faxes](#) window.



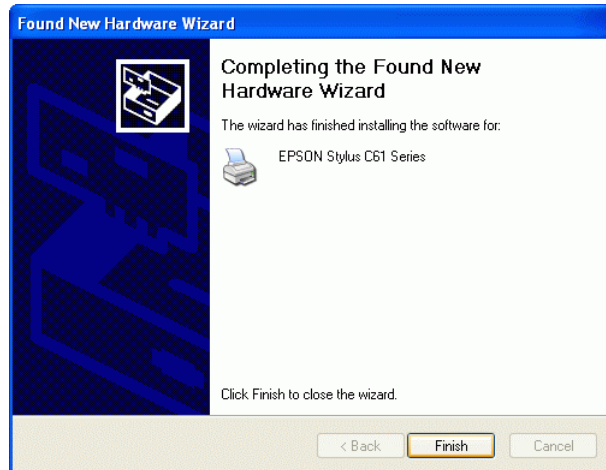
2. Configuring the second Bluetooth Combo Printer Adapter

Connect the second Bluetooth Combo Printer Adapter to another EPSON Stylus C61 printer. Power on Bluetooth Combo Printer Adapter and printer.

Step 1:

Follow the steps 1 ~ 15 as described in ADD ONE PRINTER (from page 7 to page 12) to add the second local printer.

Click **Finish**.



Step 2:

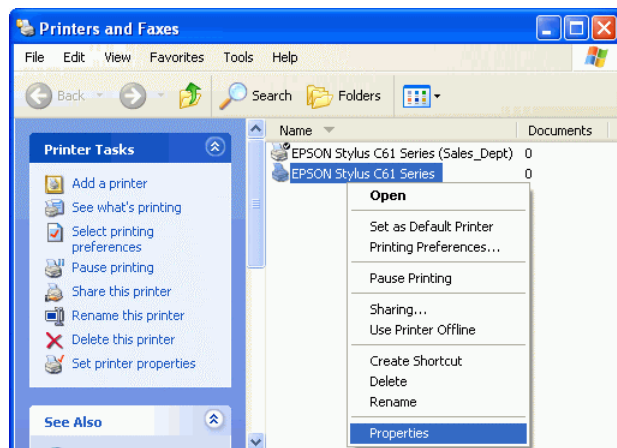
Click **My Computer** icon on the desktop screen,

select **Control Panel**,

select **Printers and Faxes**.

Right click on **EPSON Stylus C61 Series** printer icon.

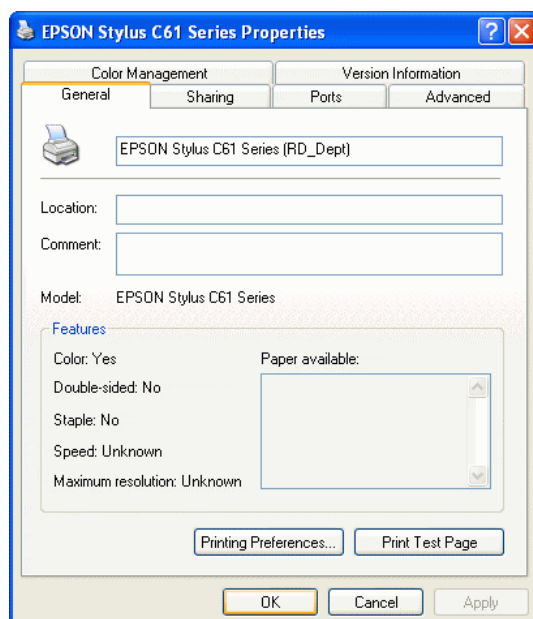
Click on **Properties**.



Step 3:

From **General** page, you can change printer name to **EPSON Stylus C61 Series (RD_Dept)**.

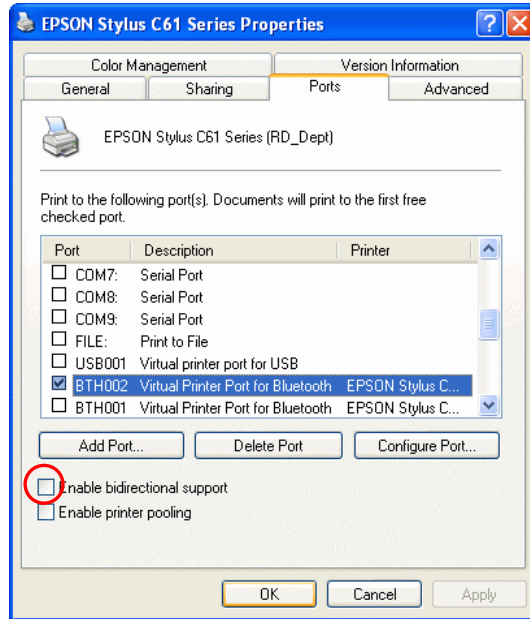
At end user side, you will only find a printer named **EPSON Stylus C61 Series (RD_Dept)**, you will not see any printer named BT-PRT-B0A352.



Step 4:

From [Ports](#) page, Windows XP has assigned a virtual printer port - BTH002 to your EPSON Stylus C61 series (RD_Dept) printer.

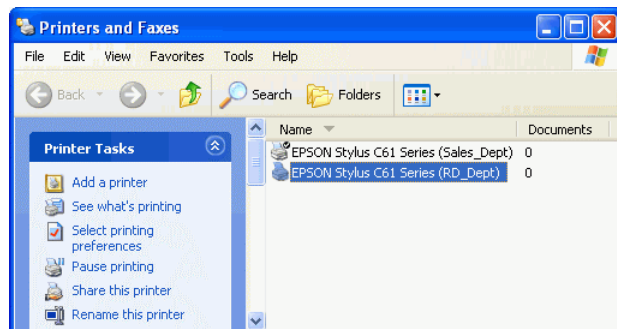
[BTH002](#) is like normal LPT1: port which is used in local printer connection. Except BTH002 is accompanied with Bluetooth Combo Printer Adapter, while LPT1: is directly connected through parallel port.



Note - Please **unmark** or **disable** bidirectional support. Some printers might stay at wait state for one minute after printing is done if bi-directional support is enabled.

Click **OK**.

The second printer - [EPSON Stylus C61 series \(RD_Dept\)](#) can be found on [Printers and Faxes](#) window.



3. Configuring the third Bluetooth Combo Printer Adapter

Connect the third Bluetooth Combo Printer Adapter to an EPSON Stylus Photo 830U printer. Power on Bluetooth Combo Printer Adapter and printer.

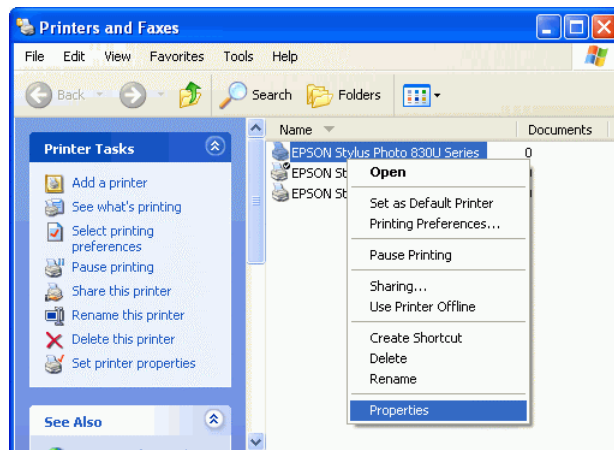
Step 1:

Follow the steps 1 ~ 15 as described in ADD ONE PRINTER (from page 7 to page 12) to add the third local printer. Click **Finish**.



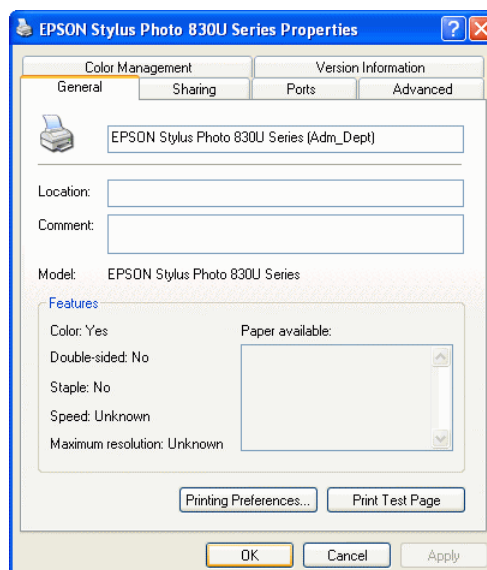
Step 2:

Click **My Computer** icon on the desktop screen, select **Control Panel**, select **Printers and Faxes**. Right click on **EPSON Stylus Photo 830U Series** printer icon. Click on **Properties**.



Step 3 :

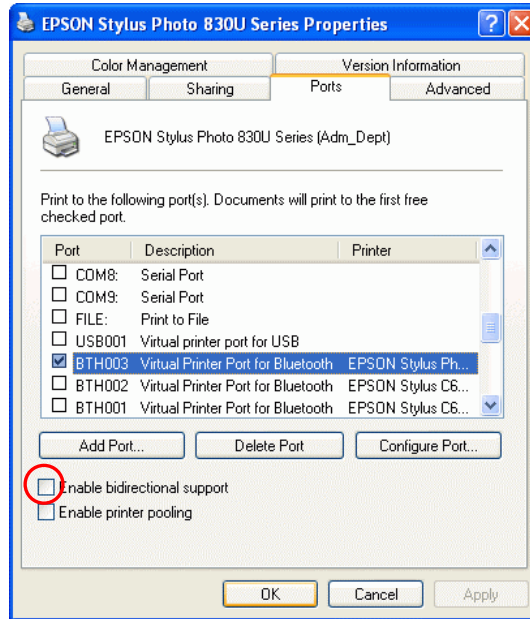
From **General** page, you can change printer name to **EPSON Stylus Photo 830U Series (Adm_Dept)**. At end user side, you will only find a printer named **EPSON Stylus Photo 830U Series (Adm_Dept)**, you will not see any printer named BT-PRT-B0A353.



Step 4 :

From [Ports](#) page, Windows XP has assigned a virtual printer port - BTH003 to your EPSON Stylus Photo 830U series (Adm_Dept) printer.

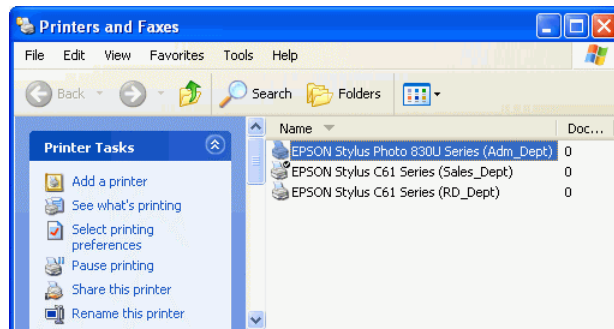
[BTH003](#) is like normal LPT1: port which is used in local printer connection. Except BTH003 is accompanied with Bluetooth Combo Printer Adapter, while LPT1: is directly connected through parallel port.



Note - Please **unmark** or **disable** bidirectional support. Some printers might stay at wait state for one minute after printing is done if bi-directional support is enabled.

Click **OK**.

The third printer - [EPSON Stylus Photo 830U series \(Adm_Dept\)](#) can be found on [Printers and Faxes](#) window.



Three Bluetooth Printers are there:

1. EPSON Stylus C61 series (Sales_Dept).
2. EPSON Stylus C61 series (RD_Dept).
3. EPSON Stylus Photo 830U series (Adm_Dept).

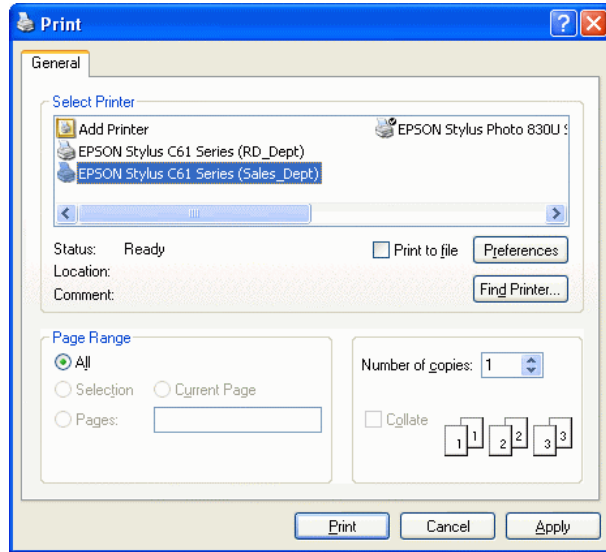
If you want to print by using these printers, please refer to next page.

Start Printing:

Print a file by using Bluetooth Combo Printer Adapter is quite straight forward, it is just like the normal way you are printing a file.

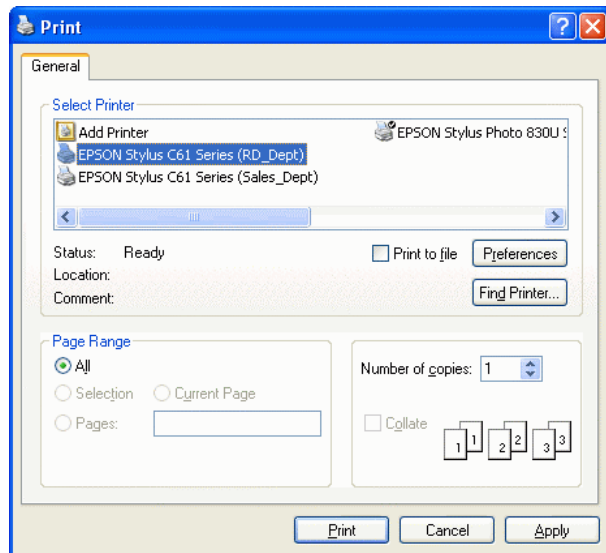
For EPSON Stylus C61 series (Sales_Dept) :

When page range and number of copies screen prompts, select EPSON Stylus C61 series (Sales_Dept) printer, then click OK.



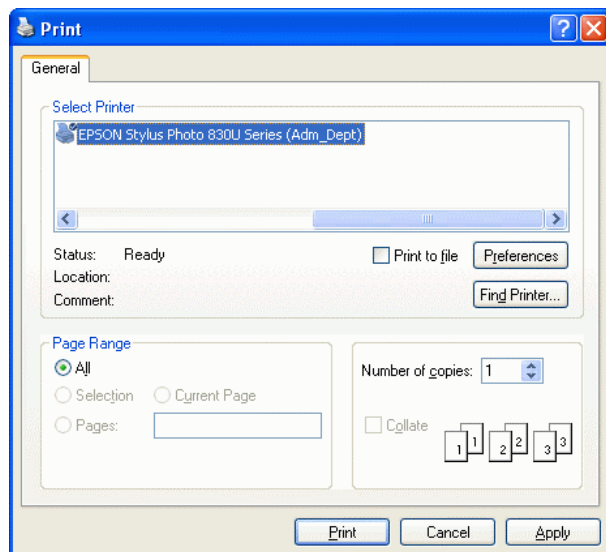
For EPSON Stylus C61 series (RD_Dept) :

When page range and number of copies screen prompts, select EPSON Stylus C61 series (RD_Dept) printer, then click OK.



For EPSON Stylus Photo 830U series (Adm_Dept) :

When page range and number of copies screen prompts, select EPSON Stylus Photo 830U series (Adm_Dept) printer, then click OK.



Change Printer:

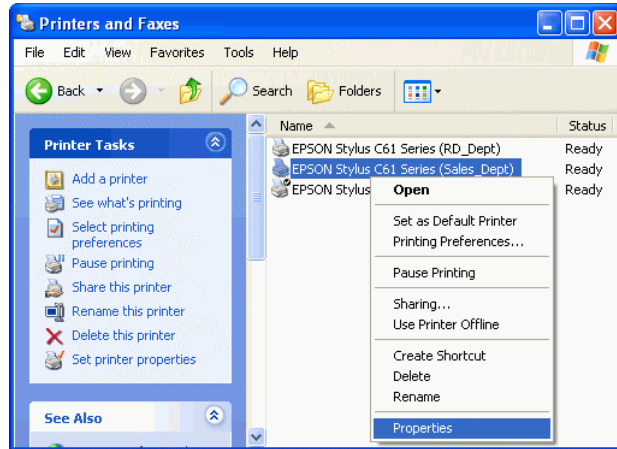
Step 1:

Select **Control Panel**.

Select **Printers and Faxes**.

Right click on printer **EPSON Stylus C61 Series (Sales_Dept)** icon.

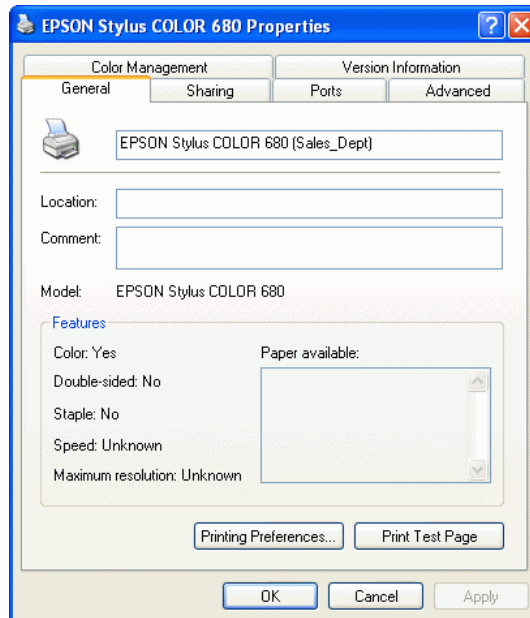
Click on **Properties**.



Step 2:

You can change printer name to such as :

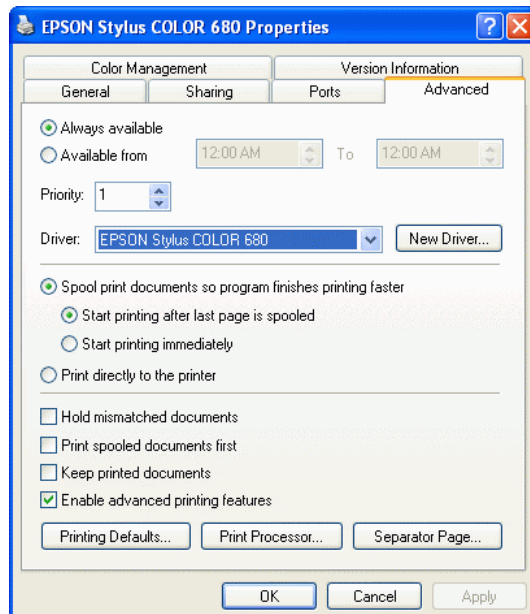
EPSON Stylus COLOR 680 (Sales_Dept).



Step 3:

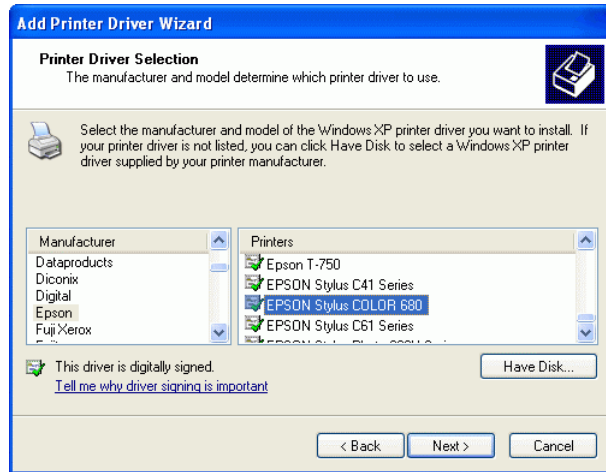
Click on **Advanced** tab to see if the driver of EPSON Stylus COLOR 680 has been installed before.

If yes, click **OK** to complete the change.



If not, click **New Driver** and follow the instructions to install it.

If New Driver is selected, this screen will prompt to instruct you to install new driver step by step.

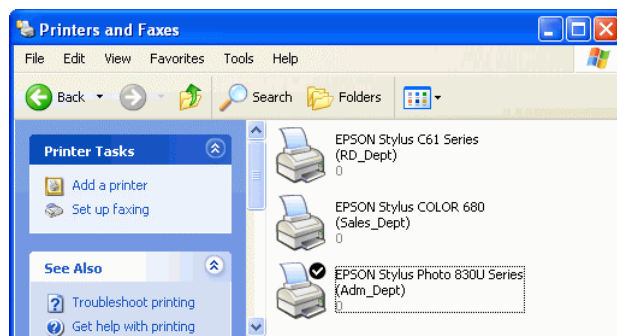


Step 4:

When installation of new printer driver is complete, the Printers and Faxes screen will look like this.

EPSON Stylus COLOR 680 (Sales_Dept)

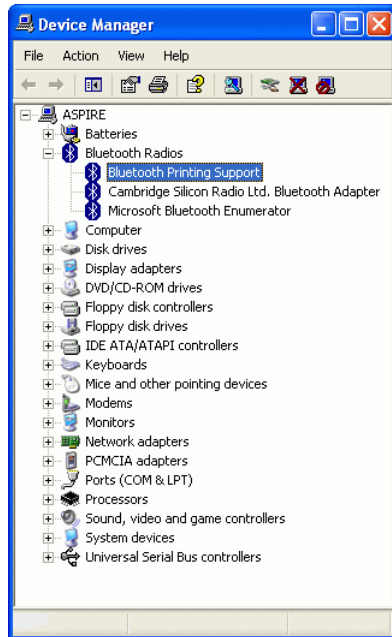
is coming out as the new printer.



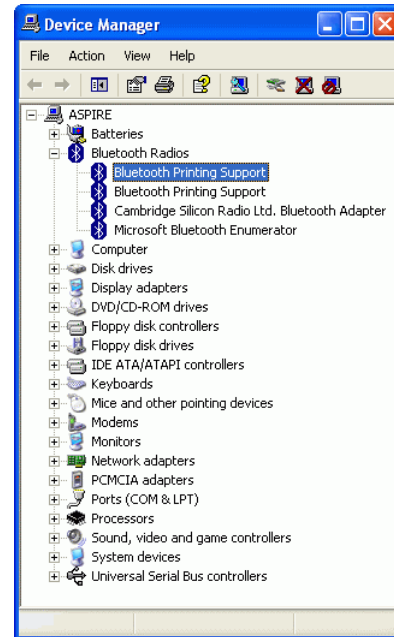
MORE LOOK ON BLUETOOTH DRIVER

The item with the label **Bluetooth Printing Support** will be added to your Bluetooth Radios when you add new Bluetooth printer.

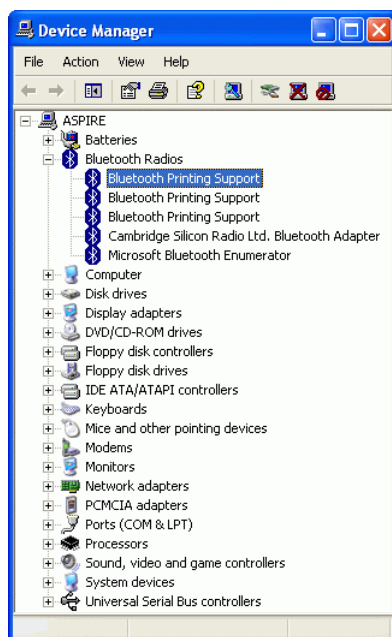
1. After the first EPSON Stylus C61 Series (Sales_Dept) printer is installed.



2. After the second EPSON Stylus C61 Series (RD_Dept) printer is installed.



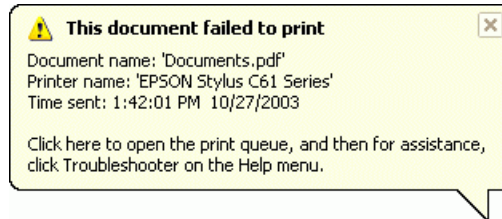
3. After the third EPSON Stylus Photo 830U Series (Adm_Dept) printer is installed.



PRINTER ERROR MESSAGE

There are some conditions which will stop the printing process :

1. INKs 100% run out.
2. Paper Jam.
3. Printer is BUSY.
4. Printer is not turned on.



When the above conditions occurred, PC will pop out a failed to print message on the screen one minute later.

User can clean the problem and continue the printing after.

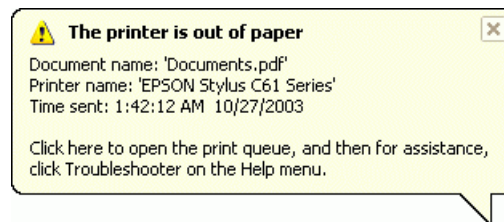
INKs run out - Replace new INKs for your printer.

Paper Jam - Remove jamed paper.

Printer BUSY - Check if there is any error in feeding paper to the printer. Some printers may have problem in feeding paper. The symptom looks like Paper Empty. You can push a button on printer to let it retry. Read the printer manuals to know how to do it. If it is impossible to continue, then you have to cancel the printer job.

5. Paper empty.

If it is out of paper, this screen will pop out.

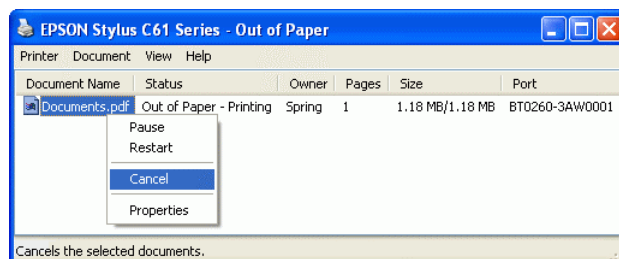


Bluetooth Combo Printer Adapter will continue the printing if the error condition is cleaned. It will not stop unless you cancel it.

Example:

Cancel an out of paper job.

You can read the following paragraphs to know how to cancel a printing job, or how to reset a Bluetooth operation.



APPENDIX A

Specifications:

Product Name	Bluetooth Print Combo Adapter
Model Name	BT-PRT
Certification	FCC, CE, BQB
Standard	Bluetooth v2.0
Frequency	Band 2.4~2.4835GHz unlicensed ISM band
Modulation Method	GFSK, 1Mbps, 0.5BT Gaussian
Spread Spectrum	FHSS (Frequency Hopping Spread Spectrum)
Services supported	SPP and HCRP print services
Transfer rates (Max)	230 Kbps Asymmetrical
RF Output	Power Class 1
Working distance	Greater than 100m in free space
Sensitivity	<-88dBm at < 0.1% BER
Power consumption	Tx Typical: 115mA
	Rx Typical: 75mA
	Standby Mode: 15mA
Input power	5VDC
I/O Interface	USB, IEEE-1284
LED indicator	Power / Bluetooth active /Printing active
Environment	Operation temperature: 0 °C ~ + 60 °C
	Storage temperature: -10 °C ~ +70 °C
	Humidity: 5 ~ 90% non-condensing
Size	70 (L) x 61(W) x 16 (H) mm

APPENDIX B

- Safety Guide:
- Read and follow all instructions and warnings provided.
- Save these instructions for future use.
- When service or replacement of parts is required, ensure work is one by a qualified technician.
- Do not use this unit near water or in a rainy/moist environment.
- Use supplied cables only.
- Do not attempt to service this product yourself. Doing so will expose you to various hazards including dangerous voltage.
- This unit is suitable for a 110V to 230V AC power supply (Auto detect).
- Disconnect the power cable (pull plug) and USB cable in the following situations:
 - In the event of service
 - Power cable/plug becomes damaged.
 - Unit is exposed to excess moisture/rain
 - Unit has been dropped.
 - Unit is being cleaned.
 - Unit must be used with adult supervision at all times. Children must not be allowed to handle any of the cables.
 - Never insert any objects other than CDs in the trays.
 - Never insert any objects through ventilation holes.

Remember!

Any electrical equipment is hazardous if handled improperly.

FCC COMPLIANCE

This device complies with Part 15 of the FCC Rules. Operation is subject to the following two conditions: (1) This device may not cause harmful interference, and (2) This device must accept any interference received, including interference that may cause undesired operation.

Federal Communications Commission (FCC) Statement

This equipment has been tested and found to comply with the limits for a Class B digital device, pursuant to part 15 of the FCC Rules. These limits are designed to provide reasonable protection against harmful interference in a residential installation. This equipment generates, uses and can radiate radio frequency energy and, if not installed and used in accordance with the instructions, may cause harmful interference to radio communications. However, there is no guarantee that interference will not occur in a particular installation. If this equipment does cause harmful interference to radio or television reception, which can be determined by turning the equipment off and on, the user is encouraged to try to correct the interference by one or more of the following measures:

- Reorient or relocate the receiving antenna.
- Increase the separation between the equipment and the receiver.
- Connect the equipment to an outlet on a circuit different from that to which the receiver is connected.
- Consult the dealer or an experienced radio/TV technician for help.

Warning:

To meet FCC requirements, a shielded power cord is required in order to prevent interference. It is essential that only the supplied power cord is to be used. Use only shielded cables to connect I/O devices to this equipment. You are cautioned that changes or modifications not approved by the party responsible for compliance could void your authority to operate the equipment.

One Year Limited Warranty

- This device is guaranteed against manufacturing defects for one full year from the original date of purchase.
- This warranty is valid at the time of purchase and is non-transferable.

- This warranty must be presented to the service facility before any repair can be made.
- Sales slip or other authentic evidence is required to validate warranty.
- Damage caused by accident, misuse, abuse, improper storage, and/or un-certified repairs is not covered by this warranty.
- All mail or transportation costs including insurance are at the expense of the owner.
- Do not send any product to service center for warranty without a RMA (Return Merchandise Authorization) and proof of purchase. Ensure a trackable method of delivery is used (keep tracking number).
- Warranty is valid only in the country of purchase.
- We assume no liability that may result directly or indirectly from the use or misuse of these products.

IMPORTANT

"This warranty will be voided if the device is tampered with, improperly serviced, or the security seals are broken or removed"